

## OK Boomer

I WAS BORN IN 1956, THE HEIGHT OF THE BABY BOOM. As such, I recently celebrated my 64th birthday, and while that event might cause some to think about the Beatles (which I do all the time anyway), someone of my bent will naturally think about chess. I went to my puzzle collection to find an idea, and the first book I consulted was *Stephen Sondheim's Crossword Puzzles*. I remembered those puzzles frequently invoking other games, and I was pretty sure there was a chess puzzle. I was right. Sondheim acknowledges Gong of The Listener, and I acknowledge them both.

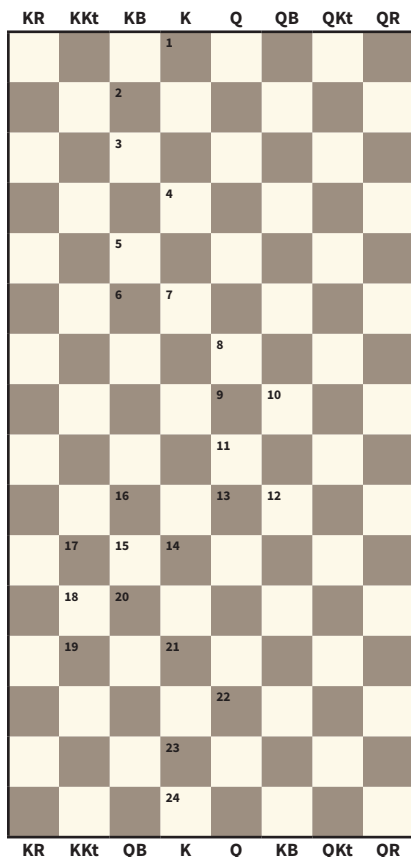
The diagram represents an elongated chessboard. Solvers should envision a top row occupied by white backrow chess pieces arranged as at the start of a game. Each piece moves as it would in chess, each move being a word. The last letter of one word will be the start of the next, until the piece reaches a corresponding position in the bottom row. The final positions will be those of a starting row of black chess pieces. Since a bishop stays on one color, the Queenside and Kingside Bishops switch sides. Knights and Rooks begin and end on the same side of the board.

Moves are clued in the correct order under their respective pieces, but lengths must be determined by the solver. Knights'

moves, of course, are all of four letters (two spaces in one direction, horizontal or vertical, and one in the other, or vice versa).

The King's journey, which follows the numbered squares in sequence, spells out the names of two famous chess players. The top and bottom rows contain two eight-letter words, clued first.

There are two proper nouns (besides the two chess players) and three foreign words. Everything else is playable in Scrabble. There are a few more answers that may be proper nouns, even as clued, but are found in the Scrabble dictionary. (For example, superman.) Ignore punctuation, which is intended to confuse. Thanks to Bob Fink, Eric Klis, and Jerry Miccolis for test-solving and editorial suggestions.



### Clues

#### Top row

- Steve Martin at times: bar stud

#### Bottom row

- Exchange brand of sneakers at counter

#### KR:

- An agreement to insure oatmeal, perhaps?
- Rope off foreclosed property
- Mostly destroys tainted shellfish
- Bickering brought about last call
- Gown we expressed to Nick

#### KKt:

- Cut requested In many regions
- Platform said to be unfocused
- New oils from Hopper
- After its premiere, *Don Juan* closed
- GOP's congressional delegates
- Good deal on cruise at auction
- Governor, I'm-er-nervous
- Frost's poems often do this to the ear
- Send out intentions
- Brisk ascent offered by a few waves from Jamaica
- Wrestling with Descartes' conclusion, love
- Nemo's bizarre prophecy
- Initially, not everyone raved over *Fiddler*

#### KB

- Runaround Sue does not need university or any fostering agency
- Commander at Harper's Ferry returned as a slippery one
- Hideaway east of a fancy LA community

**TOM TOCE is a senior manager for actuarial services with Ernst & Young in New York and is a member of the Jeopardy Hall of Fame. Solutions may be emailed to him at [Thomas.Toce@ey.com](mailto:Thomas.Toce@ey.com). In order to make the solver list, your solutions must be received by March 31, 2020.**

