



Spider's Web

EACH OF THE 16 RADIAL WORDS is to be entered with the letters in mixed order. Eleven of the radial words are five letters and will fill their radials' five spaces. Some spaces (one per ring) catch an extra letter, as a spider's web catches bugs, and so five of the radial words will be six letters.

The ring words vary in length. I provide the starting space for each ring's first word, with subsequent words occurring in clockwise order. If you'd really like to torture yourself, however, cover up the starting space information and try solving the puzzle without it. I'll give you extra credit next issue, honor system.

There is only one proper noun among the answers. The only (mildly) unusual words occur at Radial 3 and Ring C3.

The two-letter spaces occur in clockwise order from the outermost to the innermost ring. That is, if Ring A's two-letter space occurs in Radial 3 (it doesn't), then Ring B's would have to be in Radial 4 or higher, and so on. These letters, with no reordering, yield an apt 10-letter word.

The clues are cryptic clues. This means that one end is a fairly straightforward definition of the answer, while

the other is an alternative, often mechanical, way of getting to the same word. In this puzzle, the mechanical means I use may include puns, homophones, anagrams, constructions, and double definitions. (For a further explanation of cryptic clues, e-mail me at Thomas.Toce@ey.com.) Ignore punctuation, which is intended to mislead.

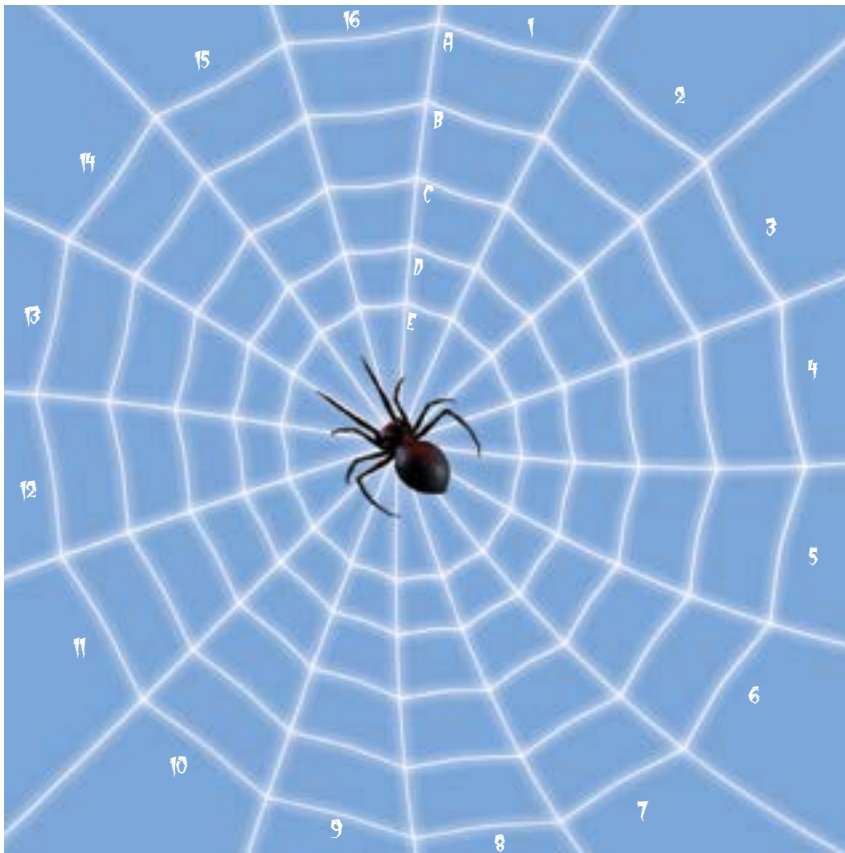
Thanks to Eric Klis, for test-solving and editorial suggestions.

Radial Clues

1. Guy I see texting is frenzied
2. Turned partner in to Himmler's gang (editor)
3. Roman maladies from little streams
4. Terrific to irritate via talk radio
5. Appears to lay eyes on manuscript
6. Wild tales of magnetic scientist
7. Pertaining to the main artery, one Ohio route, Interstate-100
8. Pay back for clock watcher
9. Little island in the Sound I rent out
10. Mother, the creator of misery is winning the contract
11. At the beginning, they wash down the things over there
12. Are exits destroyed?
13. Souvenirs to Salazar and Burns
14. Rock mined from sturdy material
15. Fetish in España: hugging beams
16. Out of practice but loyal after a fashion

Ring Clues

- Ai** B-school test following sparkling wine is Mae's earliest example of blurred vision
- Aii** Former shelter within reach?
- Bi** Eli found in Roman Catholic ark
- Bii** Great joy in connection running late
- Biii** Audio distortion or something funny



10-letter word from the two-letter spaces:

Starting points for ring clues
 Ai=Space A1; Bi=Space B4; Ci=Space C4; Di=Space D3; Ei=Space E1

- Ci Classify an arrangement of Sarto's
- Cii OK, ski casually to pavilion
- Ciii Dress for the Oktoberfest? Considering the hops, do I iron, Adolf?
- Di Reset . . . reset . . . aim
- Dii On edge from wild teens
- Diii Looking back, yes, Spanish semen is a source of ruin
- Ei Select a badly hammered instrument
- Eii Little bug chirping in May
- Eiii Shortstop sliding into Staten Island club's girly-man

Solutions may be e-mailed to Thomas.Toce@tocomtoce.com. In order to make the solver list, your solutions must be received by July 31, 2010.

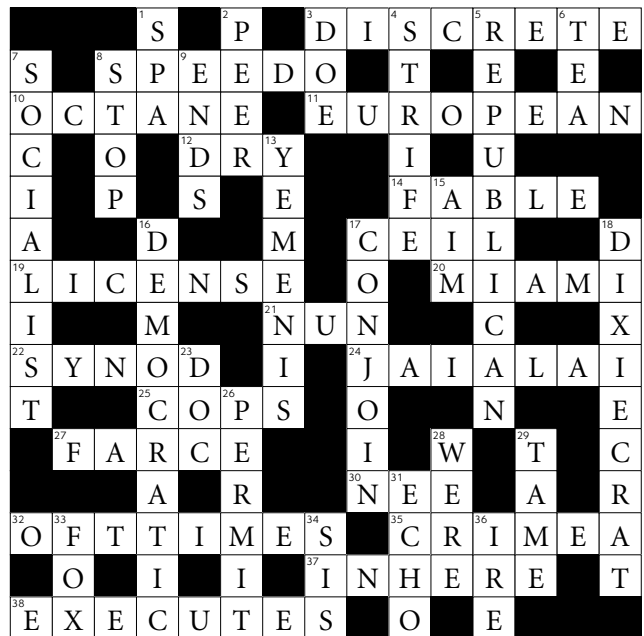
Previous Issue's Puzzle—Party Time

Across Clues

3. DISCRETE—Anagram of “secret ID”
8. SPEEDO—Anagram of “depose”
10. OCTANE—Anagram of “one-act”
11. EUROPEAN—Anagram of “no, a purée”
12. DRY—DEVILRY - EVIL (“malice”)
14. FABLE—FLAPPABLE - LAPP
17. CEIL—Homophone of “Seal”
19. LICENSE—LICE (“cooties”) + N (“no”) + S (“satisfactory”) + E (“entrance”)
20. MIAMI—MI(A)MI (“alto interrupting Mimi”)
21. NUN—Homophone of “none” (“not one”)
22. SYNOD—Reversal of DO + NY (“New York”) + S (“Saturday”)
24. JAI ALAI—Homophone of “hi, a lie” (“hello, a falsehood”)
25. COPS—Double definition
27. FARCE—FA(R)CE (“face-saving run”)
30. NEE—KNEE - first letter (“cap falling off”)
32. OFTTIMES—Anagram of “emit soft”
33. CRIMEA—CRIME (“wrongdoing”) + A (“one”)
35. INHERE—IN (“popular”) + HERE
38. EXECUTES—EXES (“former spouses”) surrounding CUTE

Down Clues

1. SPA—Anagram of “Pa’s”
2. PEER—PEE (“number one”) + R (“retired”)
3. DOE—Homophone of “d’oh” (“Homeric expression”)
4. STRIFE—ST (“street”) + RIFE (“very common”)
5. REPUBLICAN—RELIC (“something that survives”) around PUB (“alehouse”) + AN (“one”)
6. TEA—Anagram of “ate”
7. SOCIALIST—SOT around CIALIS (“uplifting drug”)
8. STOP—Reversal of “pot’s”
9. ENDS—AMENDS (“repairs”)—AM (“after morning”)



13. YEMENIS—Anagram of “enemy is”
15. AIM—reversal of MIA (“soldier who may have been captured”)
16. DEMOCRATIC—Anagram of “comedic art”
17. CONJOIN—CON (“prisoner”) + JO (“little woman”) + IN (“at home”)
18. DIXIECRAT—DIX (“509”) + IE (“that is”) + CRAT (“heads of Cuba, Russia, and Tunisia”)
23. DOC—Homophone of “dock” (“stay”)
26. PERMIT—PERM (“hair treatment”) + IT (“that one”)
28. WERE/WE'RE—Double definition
29. TAME—Anagram of “meat”
31. ECHO—JOE CHOSE - JOSE
33. FOX—F (“female”) + OX (“bovine”) and Matthew FOX, star of Lost
34. SIS—SS (“Hitler’s squad”) around I (“me”)
36. IRE—I (“yo”) + RE (“regarding”)

Solvers

Arlan Aakre, Steve Alpert, Dean Apps, Steven Barclay, Karl Baker, Glenn Bier, Damian Birnstihl, Jack Brauner, Jan Brown, Jennifer Bowen, Andrew Buckley, Bob Camp, Bob Campbell, Lois Cappellano, Chris Carlson, Christian Coleianne, Tim Connor, Todd Dashoff, Gregory Dreher, Deb Edwards, Robert Fink, Tim Fitzgibbons, Gil Fitzhugh, Nick Franceschine, Elliott Goldstick, Steven Gallancy, Joe Gaworski, Olivia Giuntini, George Green, Sandy Gruhlke, Paul Haley, Rich Harder, Jason Helbraun, Pete Hepokoski, Mike Hill, Jamie and Jerry Holloman, Ruth Howald, Ruth Johnson, Brian Klimek, Eric Klis, Paul Kolell, Douglas Kraft, Louis Lana, Andrew Lang, Denis Loring, Philip Lew, Andrew Martin, Bob Matthews, Dave McGarry, Lee Michelson, Brett Miller, Rebecca Moody, James Murray, Jim Muza, Anil Narale, Rich Newell, Ray Niswander, Deb Poppel, David and Corinne Promislow, Debbie Rosenberg, Steve Ruiter, Erin Rutherford, Paul Sarnoff, Lou Scarin, Craig Schmid, Bill Scott, Andrew Shewan, Sally Jane Smith, Cleveland Steamer, Zig Swistunowicz, Tony Torelli, Betsy Uzzell, Josh Wallace, Arlene Woodruff, Wayne Worley, Frank Zaret, Grisha Zayka

T O M T O C E is a senior manager for actuarial services with Ernst & Young in New York and a member of the “Jeopardy!” Hall of Fame.